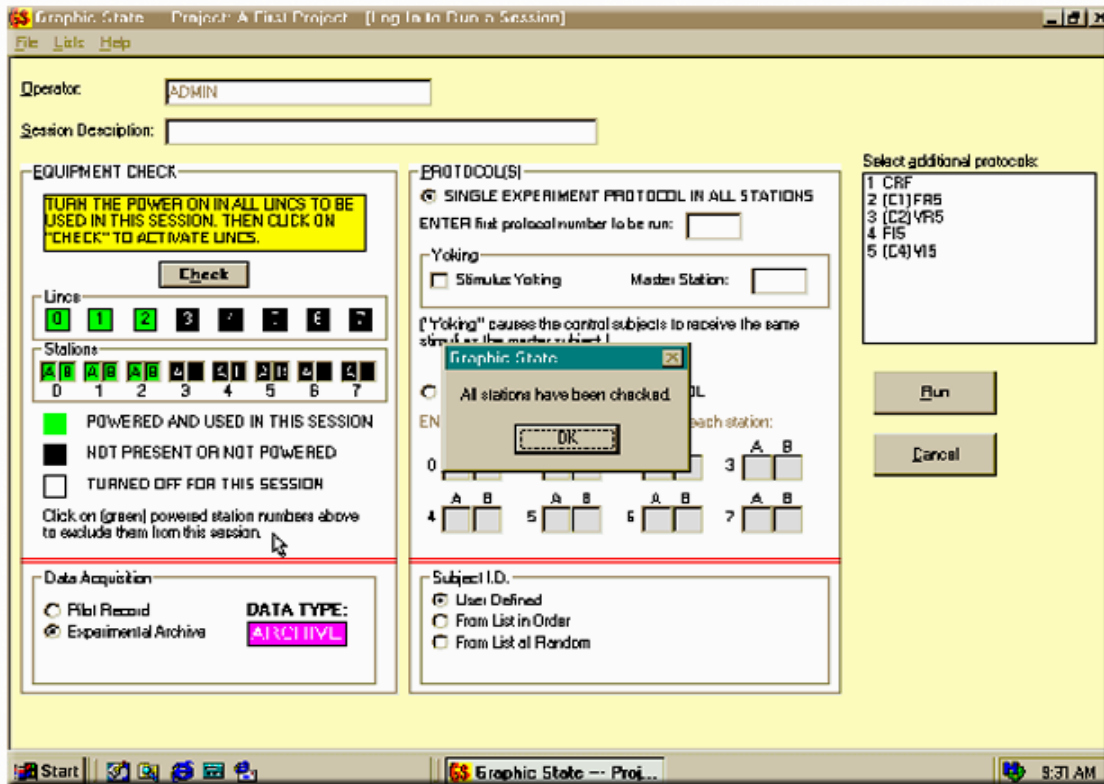


Installation Guide



Graphic State® 3.02

Copyright 1997 - 2005

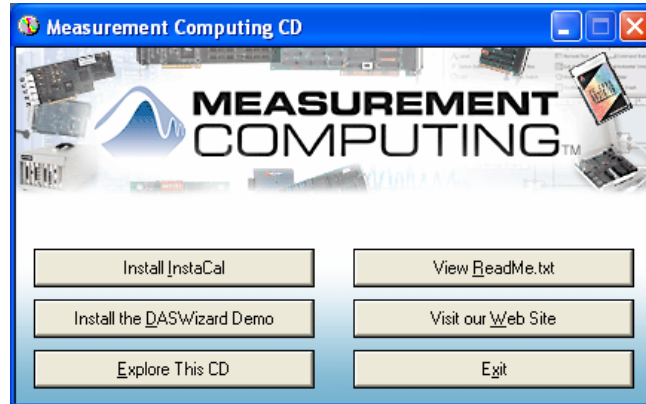


GRAPHIC STATE 3.02 – SOFTWARE INSTALLATION

If you are updating your system from an earlier version of Graphic State to Graphic State 3, it is NOT necessary to remove your previous version. You will need to remove the PCI card from the computer that was used with your previous version and then follow the installation instructions as follows. Be sure to turn the computer off whenever installing or removing interface cards in the computer.

PCI-3 INSTALLATION

Two Compact Discs were included with your system, “Graphic State 3” and “InstaCal”, included with the PCI-3 Kit. “InstaCal” must be installed first. Before beginning the installation, exit all Windows programs. Insert the “InstaCal” CD into the CD drive of the computer. The program should start automatically but if it does not, select Run from the Programs menu and choose the setup.exe file from the CD drive. Select the OK button and the monitor will display the following screen.

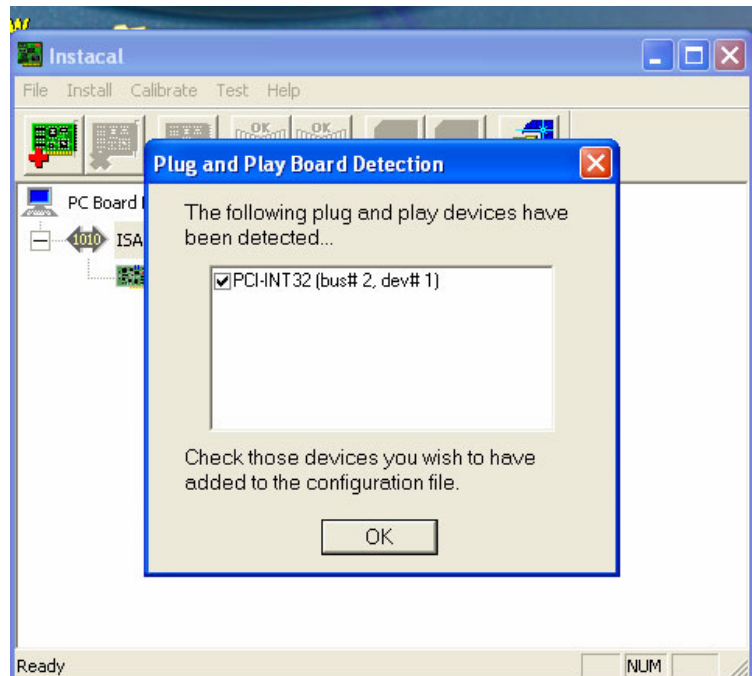


1. Select “Install InstaCal” button. A window will appear instructing you to exit all windows programs. Select Next>.
2. Another window will appear specifying the Install directory, C:\MCC. Select Next>.
3. The installation procedure will specify that icons will be added to the Program Folder, “Measurement Computing”. Select Next>.
4. The installation will begin. Once the installation is completed, a screen will appear offering you the opportunity to view the “Read Me” file for “InstaCal”. It is not necessary that you read this file.
5. Shut down the computer leaving the “InstaCal” Compact Disc in the CD Drive.
6. Now, reboot the computer. After the computer has fully rebooted, shut the computer down and install the PCI-INT32 Interface Card (PCI-3) in any available PCI slot in the computer.
7. Once the PCI-3 Card is installed, reboot the computer.
8. Windows should indicate that new hardware has been located. If not, select “Add/Remove Hardware” from Control Panel.
9. Choose the “Install the software automatically (Recommended)” option and select Next>.
10. Once the PCI-INT32 installation is completed, a new window will appear. Select the Finish button to close the Installation Wizard.



11. Now run “InstaCal” from the Program group Measurement Computing.

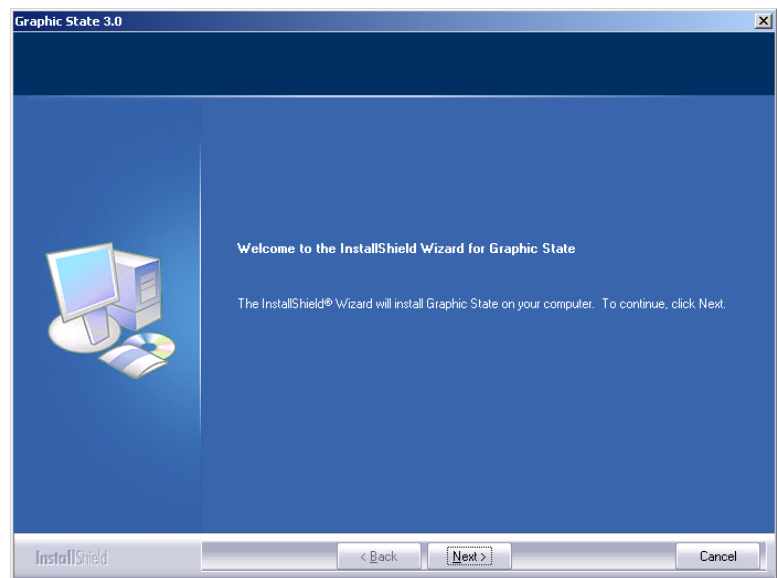
12. The PCI-INT32 (PCI-3) Interface Card should be detected. Select OK
13. Exit the "InstaCal" program and remove the Compact Disc from the CD drive.



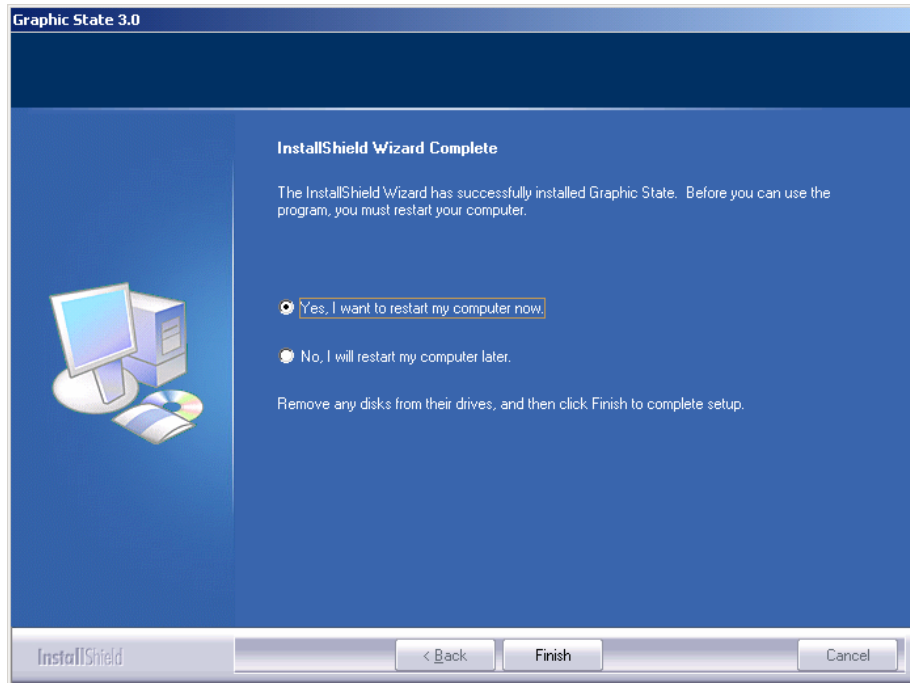
GRAPHIC STATE 3 INSTALLATION

Before beginning the installation, exit all Windows programs. Insert the "Graphic State 3" CD into your computer. The program should run automatically but if it does not, select Run from the programs menu and choose the setup.exe file from the CD drive. Select the OK button and the monitor will display the following screen.

1. The Install Shield for Graphic State Window will appear. Select Next>.



2. The License Agreement window will displayed. Select the Yes option.
3. The installation of Graphic State will continue, creating a new folder on the hard drive (C:\Graphic State) and when finished, the InstallShield Wizard Complete window will be displayed. Select the finish button and restart the computer to complete the installation.



If this installation was an upgrade from an earlier version of Graphic State, a new subfolder titled “3.02” will be created in the Graphic State Folder and any existing data bases will be moved to the new folder (C:\Graphic State\3.02\datafiles).

This completes the software installation of Graphic State 3.02.

Graphic State 3.02 is shipped with the following defaults:

Login: ADMIN

Password: password